

WHERE IN POTTERNE?

QUIZ No. 1

With this PDF, you can either:

- 1. Print it out, complete it, and hand it in as shown on page 1 of the quiz; or**
- 2. Print it out, complete it, scan it, and email it to:
quiz@potterne123.uk; or**
- 3. Complete it on-screen in Adobe PDF Reader (Acrobat Reader DC or similar), then return to this front page and click the “SEND” button below to email your answers; or**
- 4. Complete it on-screen in Adobe PDF Reader (Acrobat Reader DC or similar), then print it out and submit the hard-copy.**

WHERE IN POTTERNE?

QUIZ No. 1

This quiz sheet has been prepared by Jackie Sawyer for your amusement during this time of lockdown during the coronavirus pandemic. We hope you enjoy solving the questions – you might discover the answers when you are out on your daily walk! The prize... your name being announced* - *and pure satisfaction!*

Thanks to Central Stores in Silver Street and the George & Dragon for their help in having quiz-sheets available in-store or distributing with takeaway food orders or produce boxes. (Did you know that the George & Dragon normally holds monthly quiz evenings on the first Tuesday of the month?)

Please email your answers, **by Friday, 24th April**, to the Potterne123.uk website (quiz@potterne123.uk), or hand-in at Central Stores at any time, or at the Village Hall on Wednesday, between 10 – 11am (Food Bank drop-off point).

Your Name:

Your Street:

Your Email Address and/or Phone Number:

*Please tick here if you are happy for us to announce your name, should you win, on Potterne123.uk, Facebook and on the next quiz sheet:

1. Where would you find Jenny Mill?

2. Where could you find a safe resting place for a baby?

3. What is the location of the dipping well?

4. On which street would you be able to see an Old Post Office, the Old King's Arms and the Old Bakery?

5. What "Move-ing" song do you get if you combine part of the names of two of Potterne streets?

6. Which is the odd one out and why? Highlands, Brownleaze, Tollbar Close, the Cemetery, The Butts.

7. Unscramble the following places:

Lable celp: a.

Enclap crow: b.

Hirzu Fell: c.

8. Where would you find a pig?

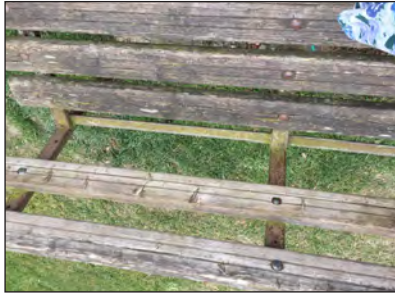
9. Which street is shiny?

10. Where would you find a barrel of port?

11. Where would you find these benches?



a.



b.



c.

12. Where would you find these no-through-road signs?



a.



b.

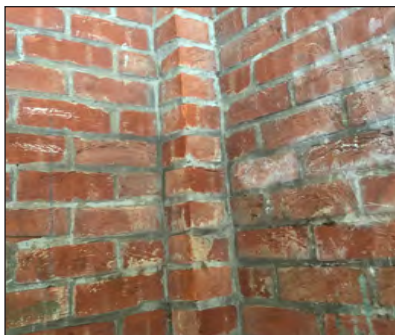


c.

13. Where would you find these walls?



a.



b.



c.

14. Where would you find these signs?



a.



b.



c.